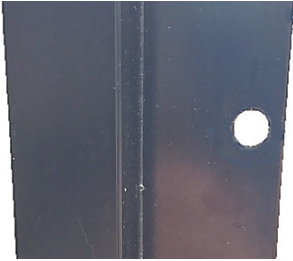




Grow More Support Bar Instructions



Each GM support bar kit includes: (2) Support bars, (10) ½" Stainless steel nuts & bolts, and (10) ¾" Stainless steel nuts & bolts.

Drill a ¼" hole on the inside lip of the frame members where you want to mount the support bars like shown at left.

Insert the head of one shorter ½" bolt into the center track of the support bar and secure it with one of the nuts. Then insert as many longer ¾" bolts as needed into the channel on the other end of the support bar (the secured ½" bolt will keep them from sliding out of the channel). These will be used to mount accessories to the support bars. Now insert another ½" bolt into the support bar.

This bolt will be used to fasten the support bar to the greenhouse frame where you drilled holes earlier.



Now that you have all of the bolts in place, insert the support bar behind the inner lips of the greenhouse frame members, and tilt the support bar at an angle. Keep the bottom end of the support bar tight against the greenhouse frame to keep the bolt from sliding out until you reach the pre-drilled hole. Insert the bolt through the hole and secure it with a nut. Now remove the nut from the other side of the support bar and lower it into

place next to the pre-drilled hole on the other greenhouse frame member. Slide the bolt through that hole and secure it with the nut you removed earlier. Follow the same procedure with as many support bars as needed. Now you are ready to mount your equipment to the support bars.

The picture below shows what the supports bars should look like after both ends are secured to the greenhouse.

